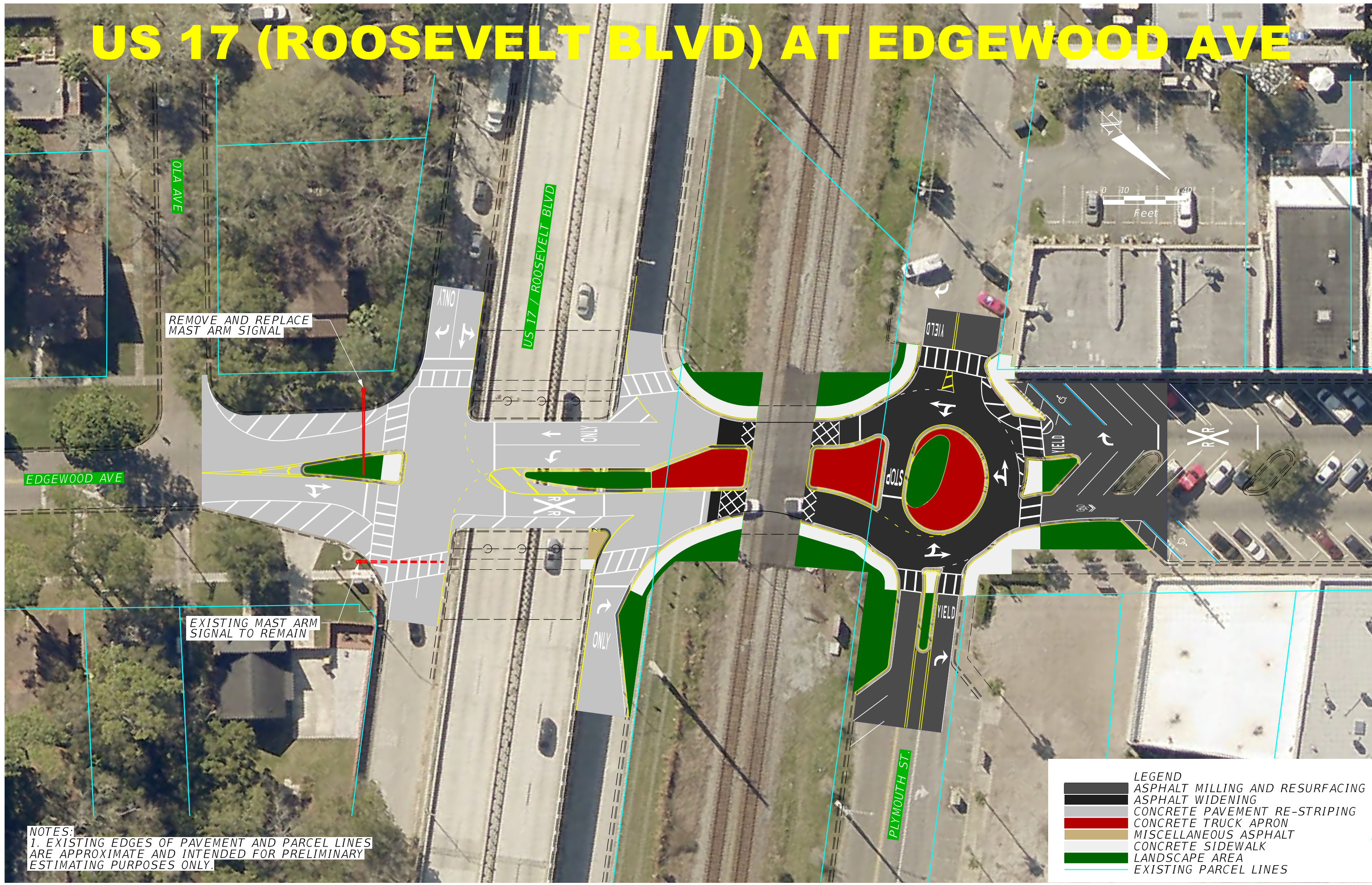


US 17 (ROOSEVELT BLVD) AT EDGEWOOD AVE



REMOVE AND REPLACE
MAST ARM SIGNAL

EXISTING MAST ARM
SIGNAL TO REMAIN



LEGEND

| | |
|--|---------------------------------|
| | ASPHALT MILLING AND RESURFACING |
| | ASPHALT WIDENING |
| | CONCRETE PAVEMENT RE-STRIPING |
| | CONCRETE TRUCK APRON |
| | MISCELLANEOUS ASPHALT |
| | CONCRETE SIDEWALK |
| | LANDSCAPE AREA |
| | EXISTING PARCEL LINES |

NOTES:
1. EXISTING EDGES OF PAVEMENT AND PARCEL LINES
ARE APPROXIMATE AND INTENDED FOR PRELIMINARY
ESTIMATING PURPOSES ONLY.